

HIPAA Document Viewer 2

(Supports 4010 and 5010 files)

HSU Computing, Inc.

Installation	2
Basic Operation	3
Option Settings	7

Installation:

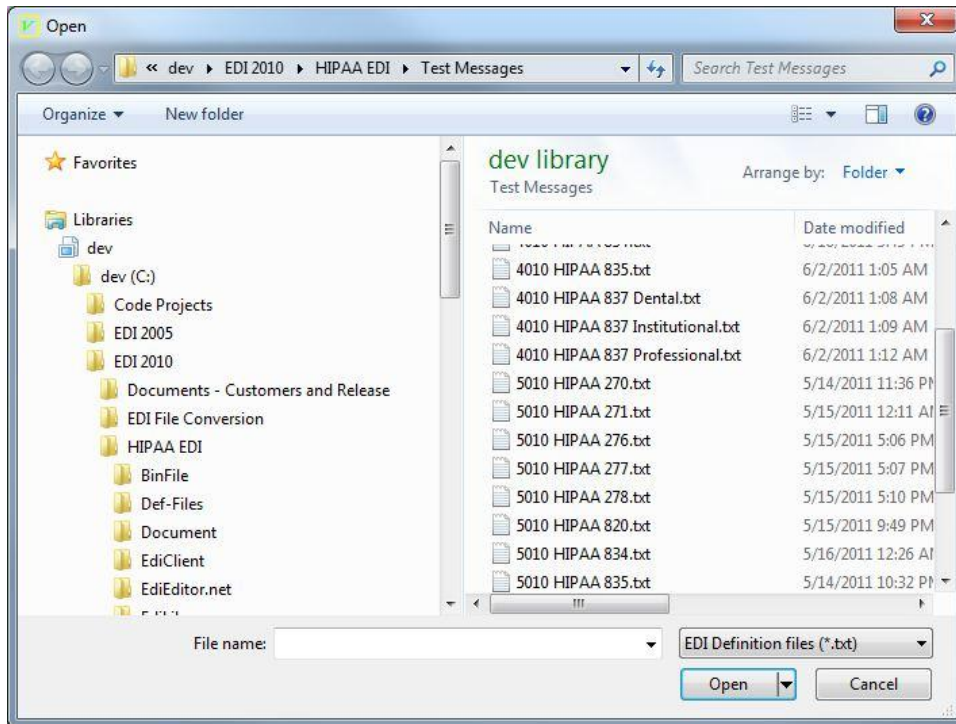
Go to www.hsu-computing.com and look for the “download page”. Select “HIPAA Document Viewer 2” Free Trial **Setup.exe** link. Click on the “**Setup.exe**” link to download the setup program. Follow on screen instructions to install.

Windows 7, Vista, or XP will warn you that this program may harm your computer. We can assure you that this program has no virus, popup window ad, or hidden adware. The setup program will not install anything other than the “HIPAA Document Viewer 2” program.

Basic Operation:

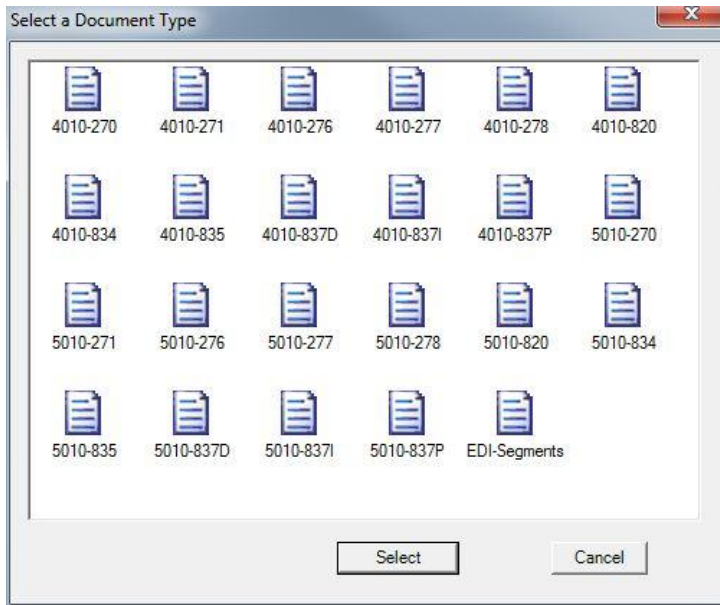
Open File

Use File -> Open menu to open a file. Or, you can click on the open File Icon on the toolbar to open a file. Viewer pops open a window for file selection:

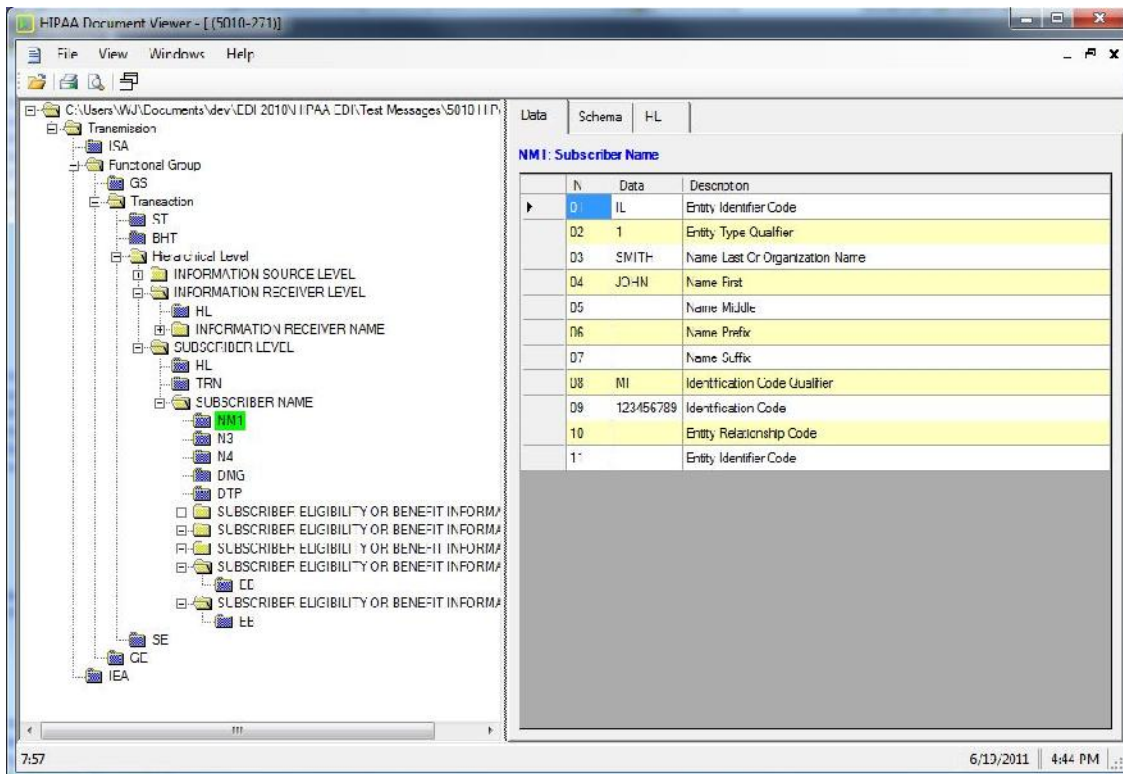


The default file extension is set to *.txt, as shown above. If your file extension is not txt, you can use the dropdown box to display all files (*.*). You can change the default file extension in the Option menu.

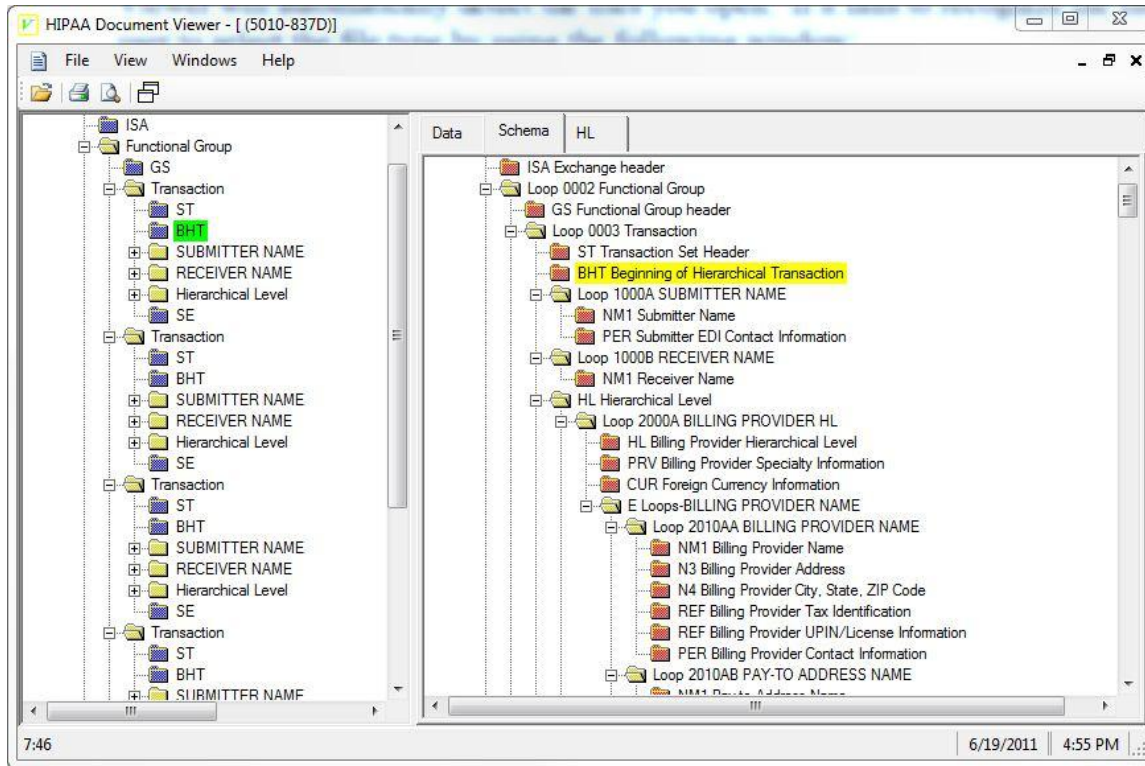
Viewer automatically detects the file you selected. If it fails to recognize the file, it will ask you to select the file type by displaying this window:



If the Viewer parses the selected file successfully, it displays the file in the following window. Pay attention to the selected tab on the right pane. The default display is “*Data*” tab which shows data elements in the selected segment on the left pane. If you select (by clicking on) a different segment on the left pane, right pane will be automatically updated to show the correct data elements.



Select the “*Schema*” tab, Viewer displays the parsing rule of the open file type:



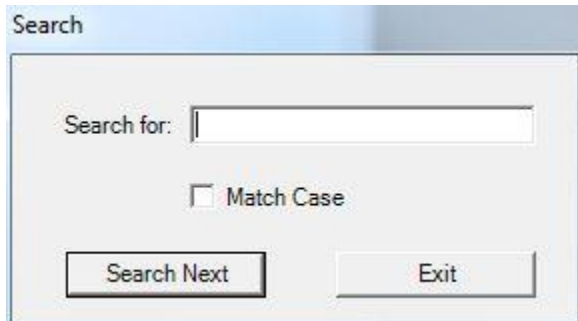
The data segment on the left is highlighted with green box. The corresponding schema segment on the right pane is highlighted with light yellow box.

The “closed folder icon” with a plus sign in front of it on both panes can be opened to display segments it contains. The “open folder icon” with a minus sign in front of it can be closed to reduce the cluster on the screen.

The “*HL*” tab shows the hierarchical structure of the open file, like 277, 837s, ...

Search Text

You can search a text string in the open file by using View -> Find menu (or Ctrl-F key combo) to open the search dialog box:



Type in the search string and check, or uncheck, the “Match Case” box. Click “Search Next” button to start the search.

Viewer starts searching from the currently selected data segment on the left pane. If there is no selected segment, Viewer starts searching from the beginning of the file.

If Viewer finds a match in a segment, it highlights the segment on the left pane and displays the data elements on the right pane.

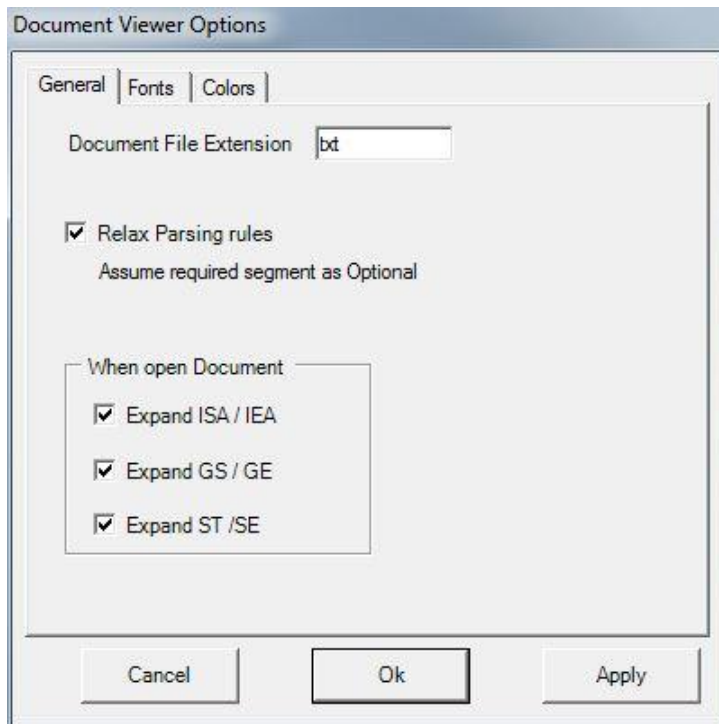
If you want to search again after a match is found, click the “search next” button again. The search starts from the next segment following the current segment where the match was found.

Warning...

If you have two matches on the same segment, in the same data element or different data element, View will only locate the data segment once. Viewer will start searching from the next segment even if the segment has two matches of the searched string.

Option Settings:

Use View -> Options menu to open the option settings window.



Default File Extension

“Document File Extension” setting allows you to set up a default file extension for your HIPAA EDI files. Viewer will only display files with the specified extension in the folder when you are opening a file.

If you want to see all files under the selected folder, you can use the dropdown box on the “Open File” dialog box to select “All files (*.*)”.

Relax Parsing Rules

If the “Relax Parsing Rules” checkbox is checked, Viewer will tolerate the required segments if they are not present. However, the usage of the first segment inside a loop is not changed. These segments indicate the usage of the loop (required or optional). Only the stand alone segments are relaxed.

Expand document ISA/IEA, GS/GE, and ST/SE

If “Expand ISA/IEA” is checked, Viewer will open the document “Transmission” folder that contains all the ISA and IEA segments.

If “Expand GS/GE” is checked, Viewer will open the document “Transmission” folder that contains all the ISA and IEA segments and all the “Transmission” folders that contains all the Functional Groups.

If “Expand ST/SE” is checked, Viewer will open the document “Transmission” folder that contains all the ISA and IEA segments.

These options are useful if you are opening large files that contain a lot of transactions.

Font and Color Tabs

If you are interested in using different fonts and colors, try these settings.

History

Rev. 2.5.0 --- Released on 8/25/2011